

MONTHLY MEMBERSHIP PROGRESS REPORT

District 318 A

Results as of: 7/31/2024

GMT:

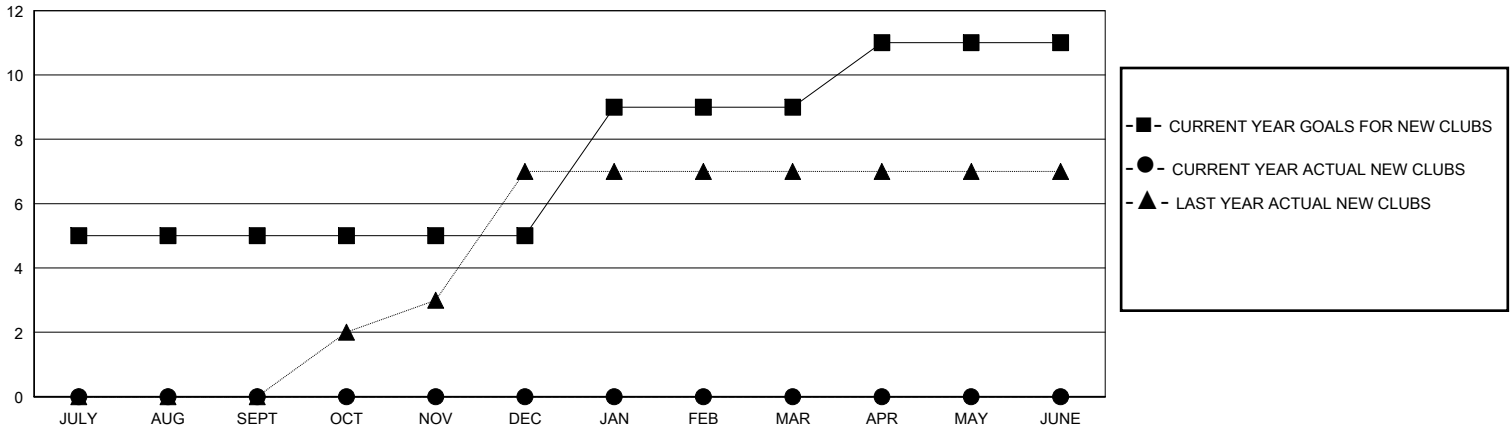
LOCATION INDIA

GMT CA

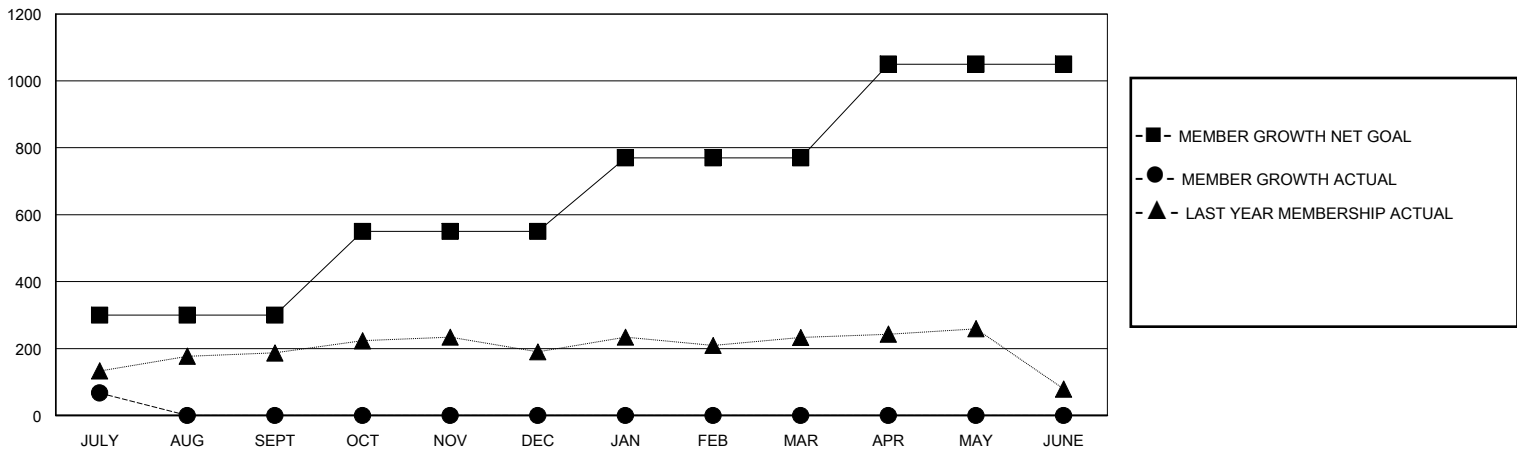
Clubs			
RESULTS FOR 2024-2025			
QUARTER	NEW CLUB GOAL	NEW CLUBS	DROPPED CLUBS
JULY/AUG/SEPT	5	0	0
OCT/NOV/DEC	0	0	0
JAN/FEB/MAR	4	0	0
APR/MAY/JUNE	2	0	0

Members			
RESULTS FOR 2024-2025			
QUARTER	MEMBER GROWTH NET GOAL	MEMBER GROWTH ACTUAL	DROPPED MEMBERS ACTUAL (including transfers)
JULY/AUG/SEPT	300	131	59
OCT/NOV/DEC	250	0	0
JAN/FEB/MAR	220	0	0
APR/MAY/JUNE	280	0	0

GOALS AND ACTUAL NEW CLUBS CUMULATIVE



GOALS AND ACTUAL MEMBERS CUMULATIVE



DROPPED CLUBS: 0	34 CLUBS OF 153 ADDED 1 OR MORE NEW MEMBERS	GENDER DISTRIBUTION MALE 3,354 (76.47%) FEMALE 1,031 (23.51%)
DROPPED MEMBERS DECEASED 2 CLUB CANCELLED 0 OTHER 57 <hr/> TOTAL 59	CLICK HERE FOR CUMULATIVE MEMBERSHIP DATA	TOTAL FAMILY UNIT MEMBERS 1,649 FAMILY MEMBERS PAYING HALF DUES 881